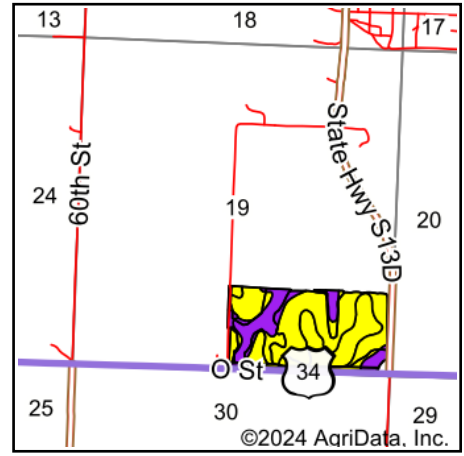
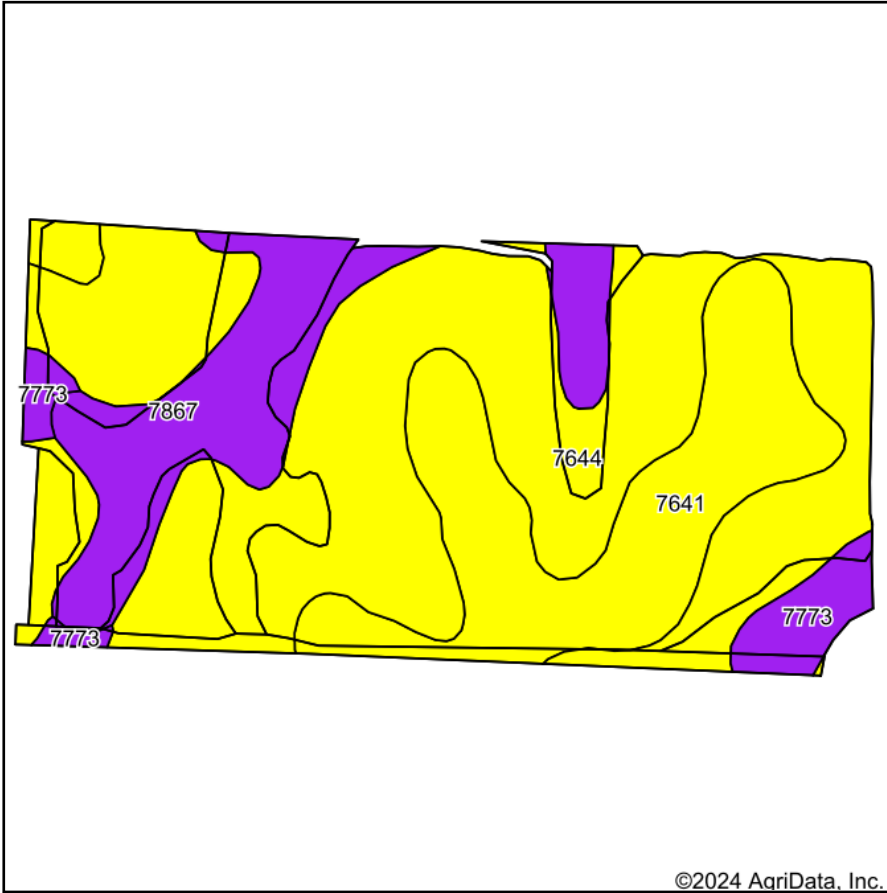


# Soils Map



State: **Nebraska**  
 County: **Cass**  
 Location: **19-10N-13E**  
 Township: **Nehawka**  
 Acres: **74.91**  
 Date: **11/26/2024**

**3E Easter & Associates**  
 Insurance • Real Estate • Auctioneering

Maps Provided By:  
**surety**  
 CUSTOMIZED ONLINE MAPPING  
 © AgriData, Inc. 2023 www.AgriDataInc.com



Area Symbol: NE025, Soil Area Version: 24

Code	Soil Description	Acres	Percent of field	SRPG Legend	Non-Irr Class *c	Irr Class *c	Range Production (lbs/acre/yr)	SRPG	Alfalfa hay Tons	Corn Bu	Soybeans Bu	*n NCCPI Overall	*n NCCPI Corn	*n NCCPI Small Grains	*n NCCPI Soybeans
7644	Yutan silty clay loam, 6 to 11 percent slopes, eroded	42.25	56.3%		IIle	IVe	3995	65	3	77	26	61	60	60	58
7641	Yutan silty clay loam, 2 to 6 percent slopes, eroded	17.43	23.3%		Ile	IIle	3973	69	3	77	26	59	59	59	56
7867	Nodaway silt loam, channeled, frequently flooded	11.96	16.0%		Vlw		2565	59		4	2	52	51	28	46
7773	Colo-Nodaway complex, frequently flooded	3.27	4.4%		IIIw		1865	55	5	84	30	63	55	41	59
<b>Weighted Average</b>					<b>3.25</b>	<b>*-</b>	<b>3668.6</b>	<b>64.5</b>	<b>2.6</b>	<b>65.7</b>	<b>22.3</b>	<b>*n 59.2</b>	<b>*n 58.1</b>	<b>*n 53.8</b>	<b>*n 55.7</b>

\*n: The aggregation method is "Weighted Average using all components"

\*c: Using Capabilities Class Dominant Condition Aggregation Method

\*- Irr Class weighted average cannot be calculated on the current soils data due to missing data.