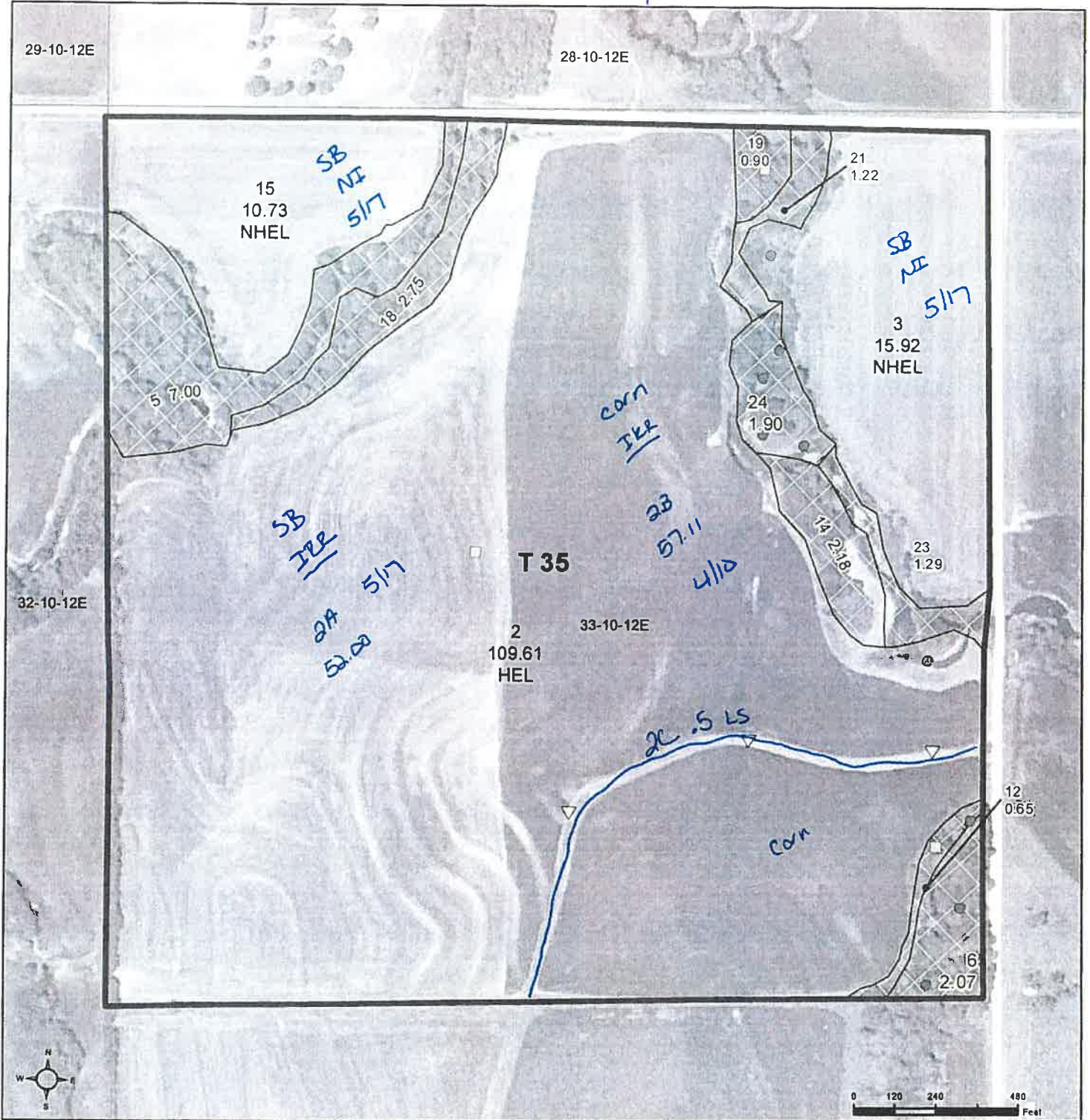


East

TRACT #2



Common Land Unit Tract Boundary

- Non-Cropland
- Cropland

Wetland Determination Identifiers

- Restricted Use
- Limited Restrictions
- Exempt from Wetland Provisions

2022 NAIP Ortho Imagery

Crop-Type-Intended Use is as listed unless noted on map.
Corn/Yellow/Grain; SB/COM/Grain; Grass/Bro/LS; All NI

Tract Cropland Total: 136.26 acres

2024 Program Year

Map Created April 04, 2024

Farm 5957

Tract 35

United States Department of Agriculture (USDA) Farm Service Agency (FSA) maps are for FSA Program administration only. This map does not represent a legal survey or reflect actual ownership, rather it depicts the information provided directly from the producer and/or National Agricultural Imagery Program (NAIP) imagery. The producer accepts the data 'as is' and assumes all risks associated with its use. USDA-FSA assumes no responsibility for actual or consequential damage incurred as a result of any user's reliance on this data outside FSA Programs. Wetland identifiers do not represent the size, shape, or specific determination of the area. Refer to your original determination (CPA-026 and attached maps) for exact boundaries and determinations or contact USDA Natural Resources Conservation Service (NRCS)