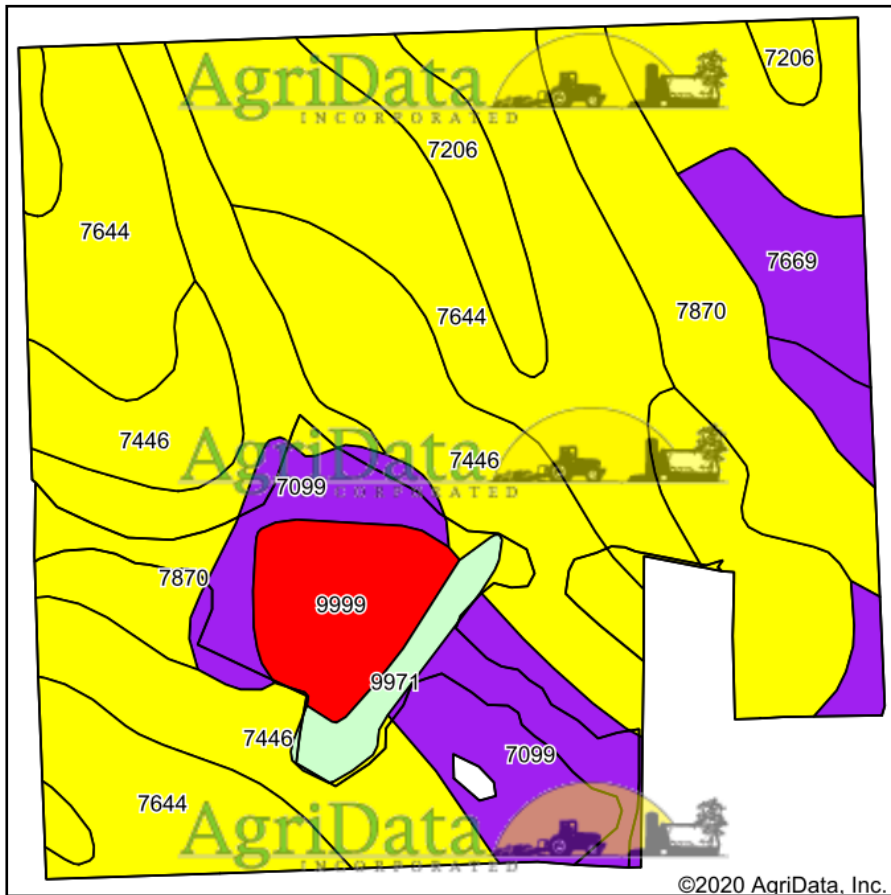
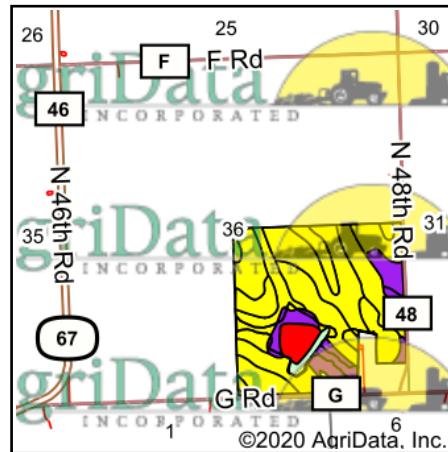


Soils Map



Soils data provided by USDA and NRCS.



State: **Nebraska**
 County: **Otoe**
 Location: **36-9N-12E**
 Township: **Berlin**
 Acres: **146.19**
 Date: **12/10/2020**

Maps Provided By:

 CUSTOMIZED ONLINE MAPPING
 © AgriData, Inc. 2020 www.AgriDataInc.com



Code	Soil Description	Acres	Percent of field	SRPG Legend	Non-Irr Class *c	Irr Class *c	Range Production (lbs/acre/yr)	SRPG	Alfalfa hay	Corn	Soybeans	*n NCCPI Overall	*n NCCPI Corn	*n NCCPI Small Grains	*n NCCPI Soybeans
7644	Yutan silty clay loam, 6 to 11 percent slopes, eroded	47.26	32.3%		IIIe	IVe	3995	66	3	77	26	62	62	55	59
7446	Morrill-Malmo, eroded, complex, 3 to 11 percent slopes	36.03	24.6%		IVe		3713	65				59	59	50	52
7870	Nodaway-Colo complex, occasionally flooded	24.74	16.9%		IIlw	IIlw	4808	70	5	130	40	92	92	55	85
7099	Zook silty clay loam, occasionally flooded	16.62	11.4%		IIlw	IIlw	3069	59	5	129	40	66	66	45	66
7206	Aksarben silty clay loam, 2 to 6 percent slopes	7.70	5.3%		IIe	IIIe	4373	69	4			67	67	61	61
9999	Water	6.41	4.4%				0	0							
7669	Mayberry clay loam, 3 to 11 percent slopes	4.91	3.4%		IIIe		3168	56	4	67	28	51	46	51	51
9971	Arents, earthen dam	2.52	1.7%		VIII		0								
Weighted Average							3705.9	61.4	2.7	63.8	20.7	*n 62.9	*n 62.7	*n 49.5	*n 58.7

*n: The aggregation method is "Weighted Average using all components"

*c: Using Capabilities Class Dominant Condition Aggregation Method

Soils data provided by USDA and NRCS.